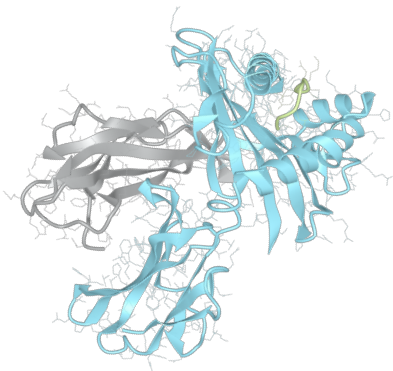


Product datasheet



sHLA-A*68:02

A*6802, A6802, A*68, A68, A68

Serological Name	A68
Peptide Load	Endogenous
Modification	Unmodified
Conjugation	Unconjugated
SKU	A6802

Product Description

Allele Name	A*68:02 B2m
HLA Class	HLA Class I
HLA Gene Locus	HLA-A
Alternative Allele Name A Chain	A*6802, A6802, A*68, A68, A68
Alternative Allele Name B Chain	-
Description	Recombinant, truncated Class I soluble Human Leukocyte Antigen (sHLA), naturally folded and glycosylated, loaded with endogenous peptides.
Serological Name	A68
Serological Split	A28
Bw4/Bw6 Assignment	-
Bw4/Bw6 Sequence	-
Allele Frequency [World Population]	
A chain	2.20%
B chain	-

Associated products

[A6802bio](#)
[A6802pe](#)

Product Specification

Product name	HLA-A*68:02
HLA Species	Human
Host Cell Line Species	Human
Clone Designation	F9B10
Tail Specification	VLDL
Peptide Load	Endogenous
Modification	Unmodified
Conjugation	Unconjugated
Complexity	Monomer
Protein Format	Recombinant, truncated, soluble, non-modified, non-labeled, endogenously loaded
Storage Temperature	4 °C (This product should be stored undiluted)
Form	Liquid
Concentration	1000.0 µg/µl
Formulation	PBS/0.02% Sodium Azide
pH	7.4
Purification Method	Affinity Chromatography
Grade	Research Use Only [RUO]
Authentication Verification	Sequence Based Typing

Protein Sequences

Alpha Chain Sequence	GSHSMRYFYT SMSRPGRGEP RFIAVGYVDD TQFVRFSDSA ASQRMEPRAP WIEQEGPEYW DRNTRNVKAQ SQTDRVDLGT LRGYYNQSEA GSHTIQRMYG CDVGPDGRFL RGYHQYAYDG KDYIALKEDL RSWTAADMAA QTTKKHWEAA HVAEQWRAYL EGTCVEWLR R YLENGKETLQ RTDAPKTHMT HHAVSDHEAT LRCWALSFPY AEITLTWQRD GEDQTQDTEL VETRPAGDGT FQKWVAVVVP SGQEQRYTCH VQHEGLPKPL TLRVSVSTDD DLA
Beta Chain Sequence	IQRTPKIQVY SRHPAENGKS NFLNCYVSGF HPSDIEVDLL KNGERIEKVE HSDLSFSKDW SFYLLYYTEF TPTEKDEYAC RVNHVTLSPQ KIVKWDRDM

Related Products

[A6801](#)
[A6901](#)
[A0201](#)
[A0101](#)

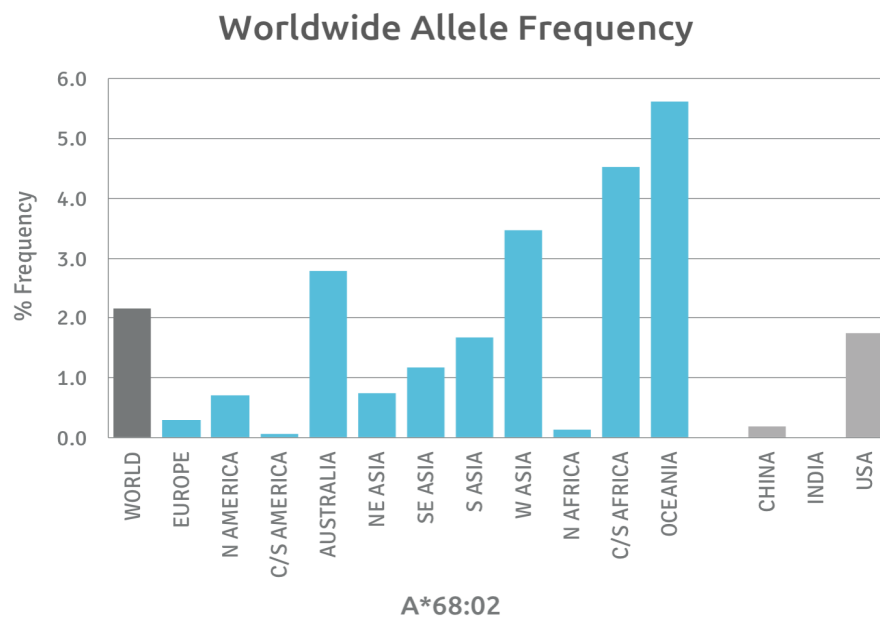
Applications

HLA Sandwich ELISAs
HLA Direct ELISAs
HLA-Sera Antibody Assays
HLA Controls in ELISA Assays
HLA Assay Standards
HLA Blocking Assays
HLA Neutralizing Assays
HLA Competition Assays
HLA Bead Assays
HLA Immunization Procedures

Recommended Antibodies

W6/32
Anti-B2m

Allele Frequency



Please note:

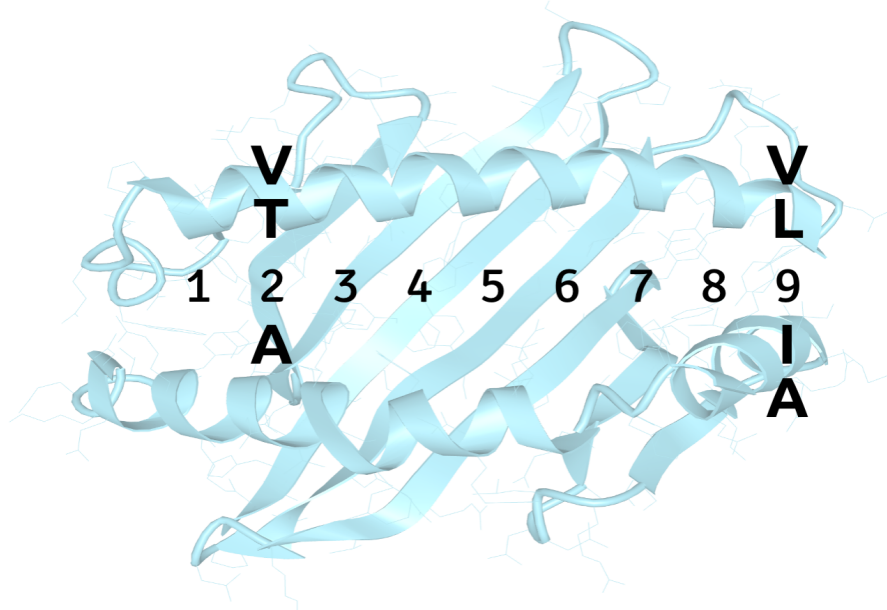
ALL PRODUCTS ARE FOR RESEARCH USE ONLY. NOT FOR COMMERCIAL USE IN DIAGNOSTIC PROCEDURES.
For more information, please visit our Policies section on our website. For licensing inquiries, please contact

licensing@hlaprotein.com

 HLA Protein
PURE PROTEIN, LLC

Motif

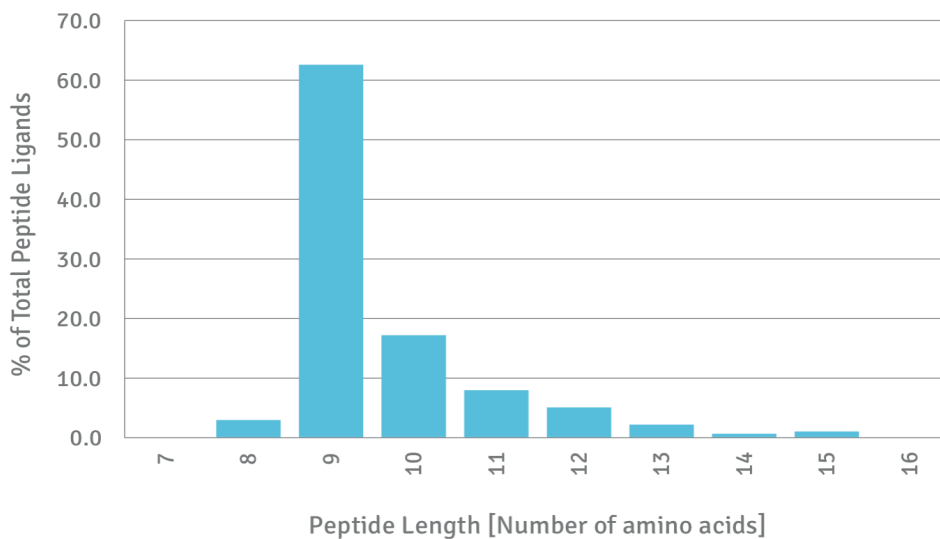
A*68:02 BINDING MOTIF



Length Distribution

HLA Length Distribution

A*68:02



Please note:

ALL PRODUCTS ARE FOR RESEARCH USE ONLY. NOT FOR COMMERCIAL USE IN DIAGNOSTIC PROCEDURES.

For more information, please visit our Policies section on our website. For licensing inquiries, please contact

licensing@hlaprotein.com

Eplet Assignments

A*68:02

Eplet	Polymorphic Residues	Antibody Reactivity
9Y	9Y	
12M	12M	
44RM	44R45M	
44RME	44R45M46E(67V)	
62RN	62R63N	
62RR	62R65R	Yes
65RA	65R69A	
65RNA	65R66N69A	Yes
66N	66N	
66NV	66N67V	
71QS	70Q71S	
76VDT	76V77D80T	
77D	77D	
79GT	79G80T	Yes
80T	80T	
80TL	80T81L	
95I	95I	
97R	97R	
99Y	99Y	
109F	109F	
114H	114H	
116Y	116Y	
127K	127K	Yes
144K	144K	Yes
144TKH	142T144K145H	Yes
145KHA	144K145H149A	Yes
149AH	149A151H	
150AAH	149A150A151H	Yes
150AH	150A151H	
151AHV	150A151H152V	
151H	151H	
152V	152V	
156WA	156W158A	
163T	163T	
184A	184A	
193AV	193A194V	
194V	194V	
207S	207S	
245V	245V	
253Q	253Q	Yes